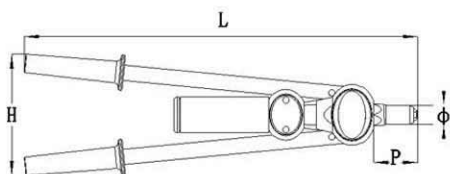


**Tool Capacity:**

Rivet Dia. Metric [ mm ]	Rivet Dia. Imperial [ inch ]	Rivet Size Number Imperial	Identification Remarks on Nosepiece	Remarks
3,0/3,2	1/8	4	B	standard
4,0	5/32	5	C	standard
4,8/5,0	3/16	6	D	standard
6,0	---	---	E	standard
6,4	1/4	8	F	standard

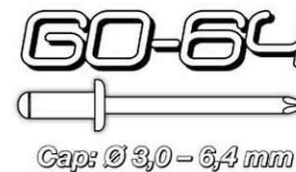
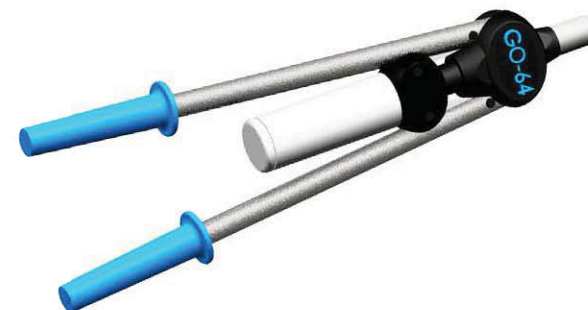


Weight	L	H	P	Ø
16kg	497mm	146mm	55mm	24



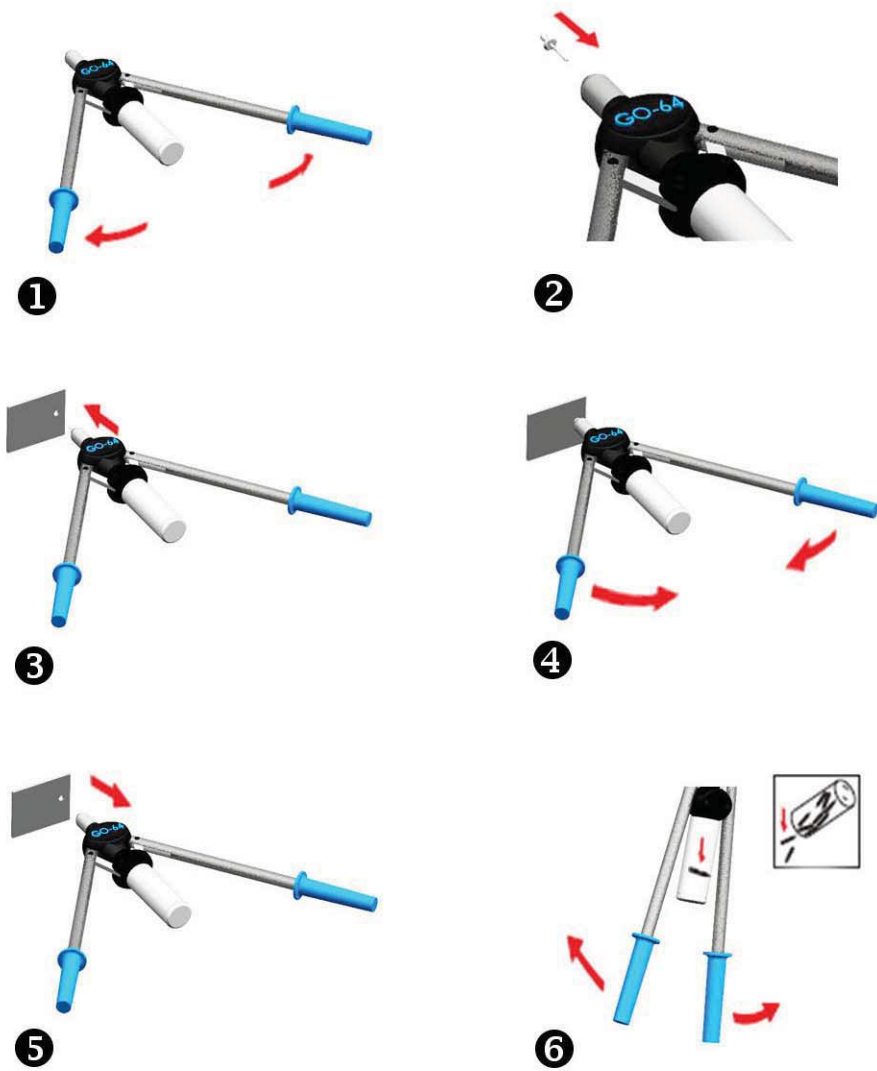
**Riveting Tool Operation Instruction**

**GO-64**

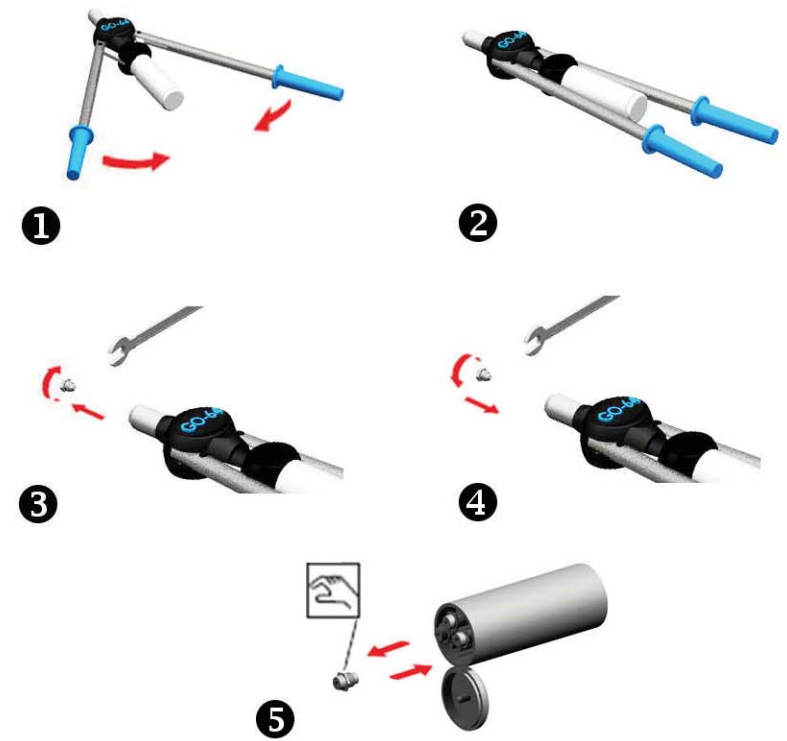


TELEFON: +49 - (0) 211 - 24 50 00 - 0 / TELEFAX: +49 - (0) 211 - 24 50 00 - 250  
 e-mail: info@blindniete.org / Internet: www.blindniete.org

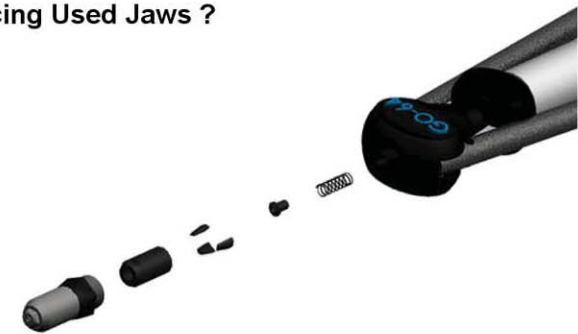
### How Riveting a Rivet ?



### How changing of Nosepieces ?



### How Replacing Used Jaws ?



*A set of nosepieces stored in restmandrel collector of the tool.*